

WAYPOINTS

EBOBA :	504025.56N 0034742.94W
SISRI :	504600.11N 0034503.81W
OTBOT :	503618.88N 0034113.66W
TE08I :	504109.51N 0034308.54W
TE08F :	504222.36N 0033530.88W
RW08 :	504355.45N 0032540.83W

VAR 0.5° W - 2022
Annual Rate of Change 0.20"E

N

WINDFARM
903 (803)

TAA 2700
25NM FROM SISRI

(SISR) (TE08I)
591°
597°

MAX 210KIAS for Procedure and Hold.

LHA 2100
1 MIN

DUNKESWELL

MIDDLEMOOR
MAPt
RW08 MAPt
EX 337
504508N 0031742W

MISSED APPROACH PROCEDURE not available without NDB(L) EX

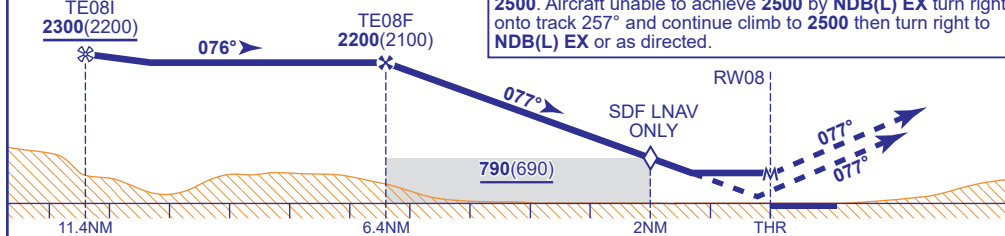
TAA 3400
TAA 3400
TAA 3400
D011A 10000 (OCNL 5100) SFC
D011C 10000 (OCNL 23100) SFC
D012 18000 SFC
D013 22000 (OCNL 55000) SFC

NM to RW08	6	5	4	3	2 (SDF)	1
ALT(HGT)	2060(1960)	1740(1640)	1420(1320)	1100(1000)	790(690)	470(370)

TCH 50	MAPt (LNAV): RW08 Continuous climb to 2500 . Passing 1000 revert to conventional	NDB(L) EX
--------	--	-----------

Continuous climb to **2500**. Passing **1000** revert to conventional navigation. Initially straight ahead to **NDB(L) EX** to hold at **2500**. Aircraft unable to achieve **2500** by **NDB(L) EX** turn right onto track 257° and continue climb to **2500** then turn right to **NDB(L) EX** or as directed.

NDB(L) EX



Aircraft Category		A	B	C	D	Rate of descent	G/S KT	160	140	120	100	80
OCA (OCH)	LNAV/VNAV	480(380)	480(380)	480(380)	480(380)		FT/MIN	850	740	640	530	420
	LNAV	560(460)	560(460)	560(460)	560(460)							
VM(C)OCA (OCH AAL)	Total Area	700(598)	900(798)	1090(988)	1090(988)							

AD 2-EGTE-8-4